

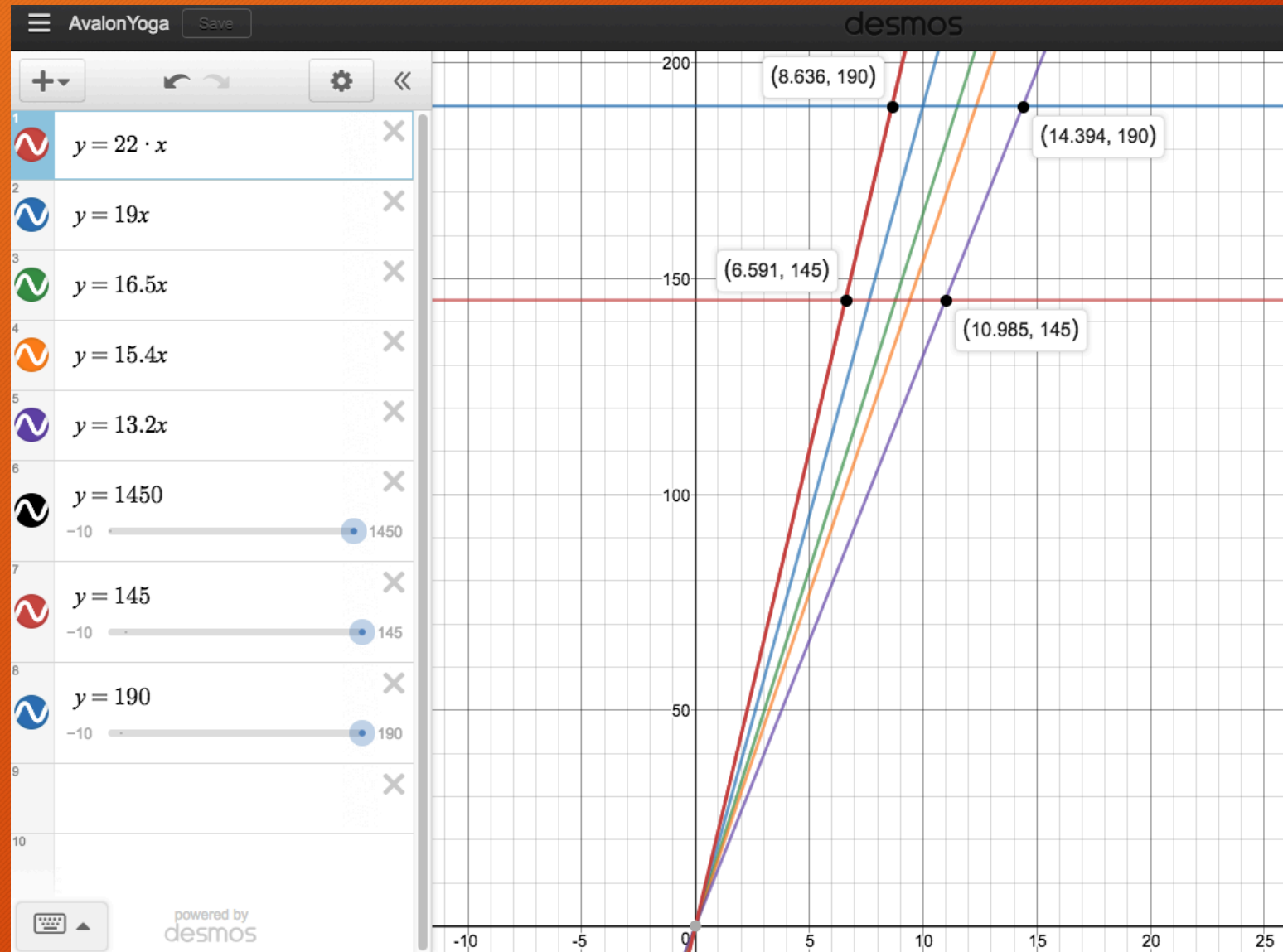
Best deal?!?

Avalon Yoga pricing model

- One-Year Unlimited Memberships – \$1450
- Monthly w/Autopay – No Contract! \$145/Mo
- Monthly memberships without auto-pay – \$190.
- Packages:
 - 1 class - \$22
 - 5 classes - \$95
 - 10 classes - \$165
 - 20 classes - \$308
 - 40 classes - \$528

Avalon Yoga pricing model

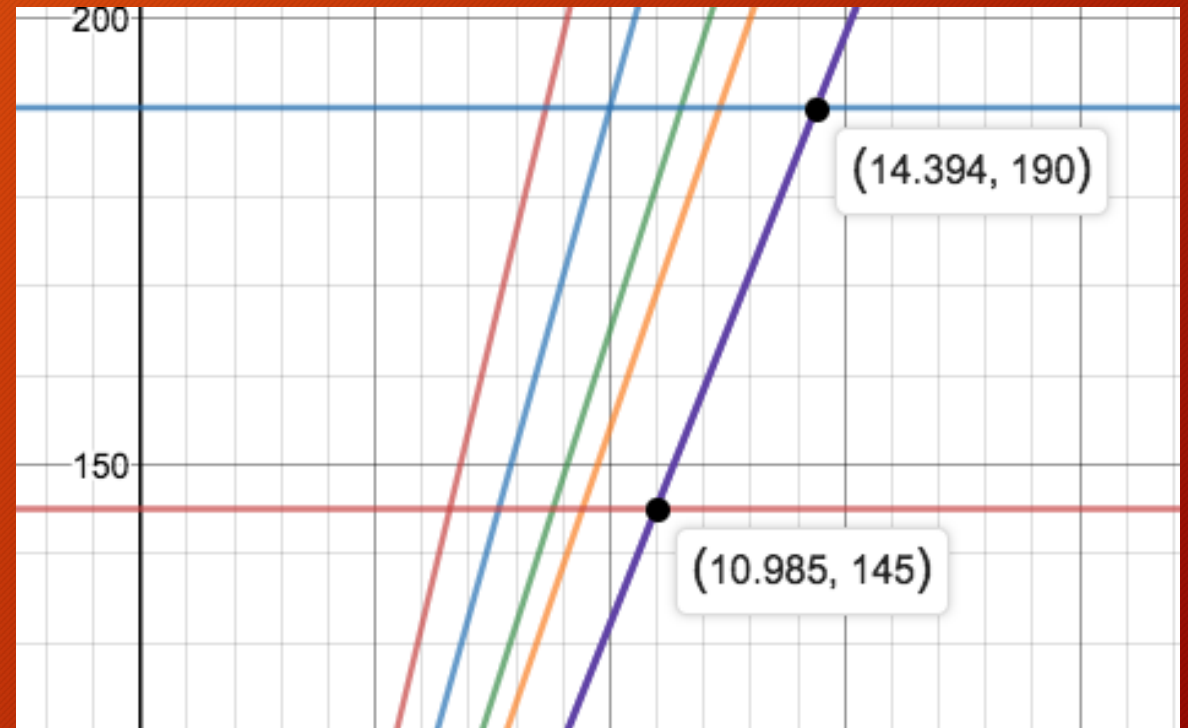
- One-Year Unlimited Memberships – \$1450
- Monthly w/Autopay – No Contract! \$145/Mo
- Monthly memberships without auto-pay – \$190/Mo
- Packages:
 - 1 class - \$22 ==> \$22 per class
 - 5 classes - \$95 ==> \$19 per class
 - 10 classes - \$165 ==> \$16.5 per class
 - 20 classes - \$308 ==> \$15.4 per class
 - 40 classes - \$528 ==> \$13.20 per class



<https://www.desmos.com/calculator/ecsss58bsq>

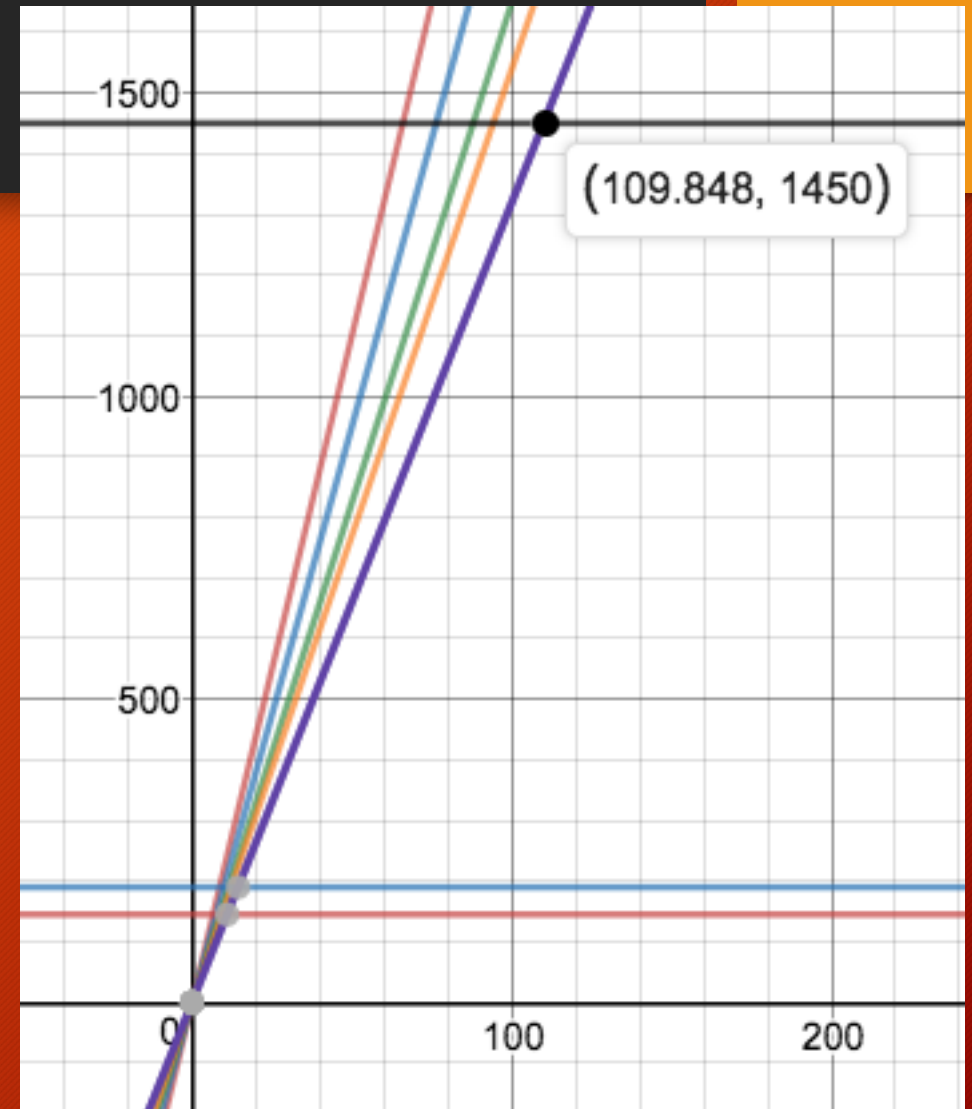
From the graph

- 40-classes deal:
 - If I take 11 classes or more a month: Better use \$145.
 - 15 classes or more per month: Even the \$190 deal is worth it.



From the graph

- If I take more than 109 classes a month, the 1450 deal is best!



Can you calculate some of these break-even points using algebra?

- You can show on desmos, but also calculate.

Other ideas

- Leasing a car
- Renting
- Mortgages
- Great America (or other) season tickets
- Theater/Synphony/Movies deals

The End